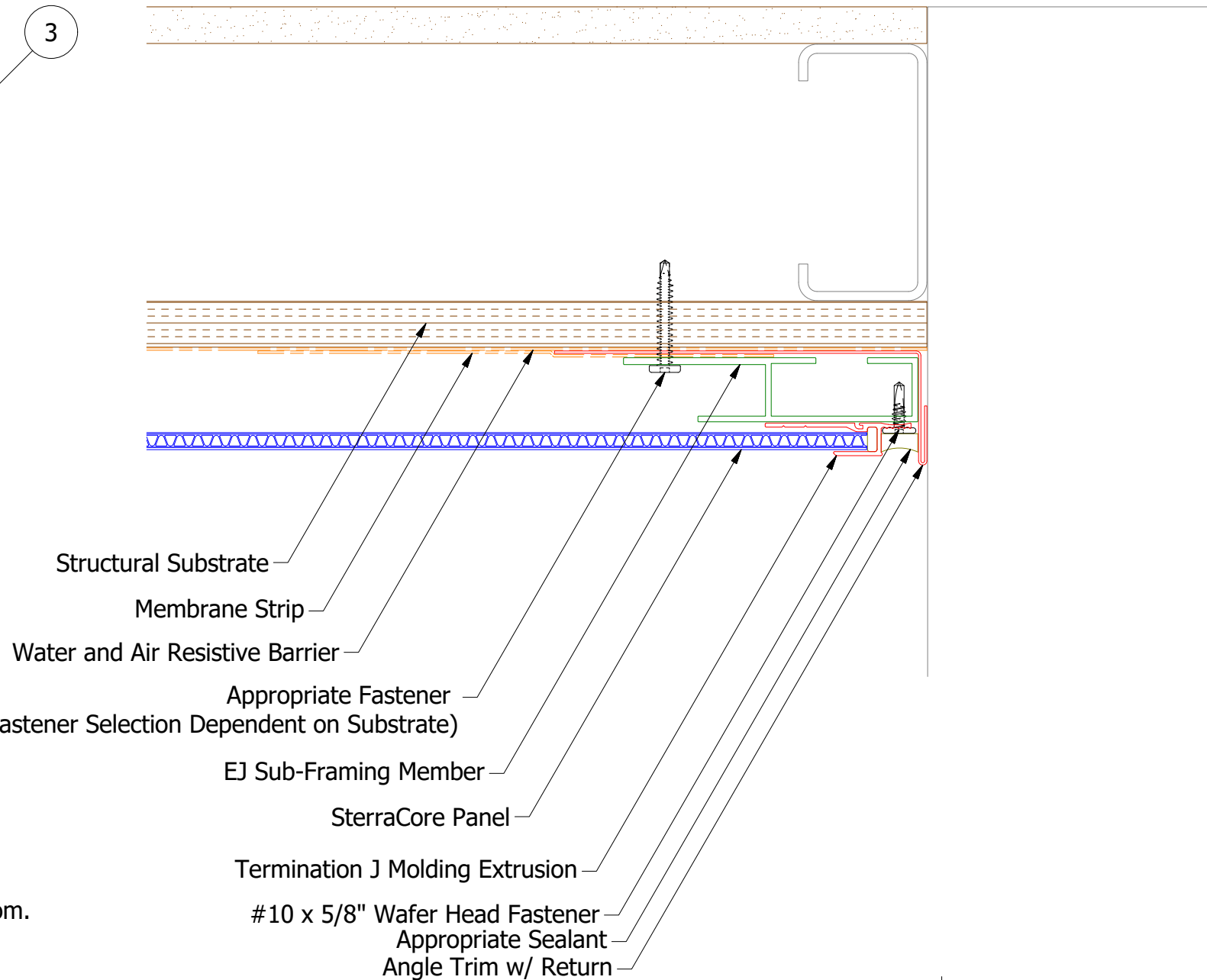


(1) Termination J Molding Extrusion Installed on EJ Sub-Framing Member.

(2) Sub-Framing Member Installed 16" - 24" O.C.

(3) Panel Adhesive Applied 16" O.C. Vertically and 4" Foam Tape Strips Installed Vertically on Sub-Framing Member. (Refer to Sub-Framing Details)



Structural Substrate

Membrane Strip

Water and Air Resistive Barrier

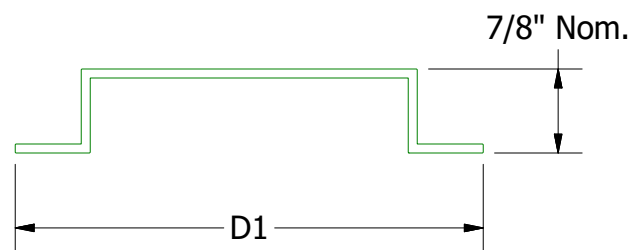
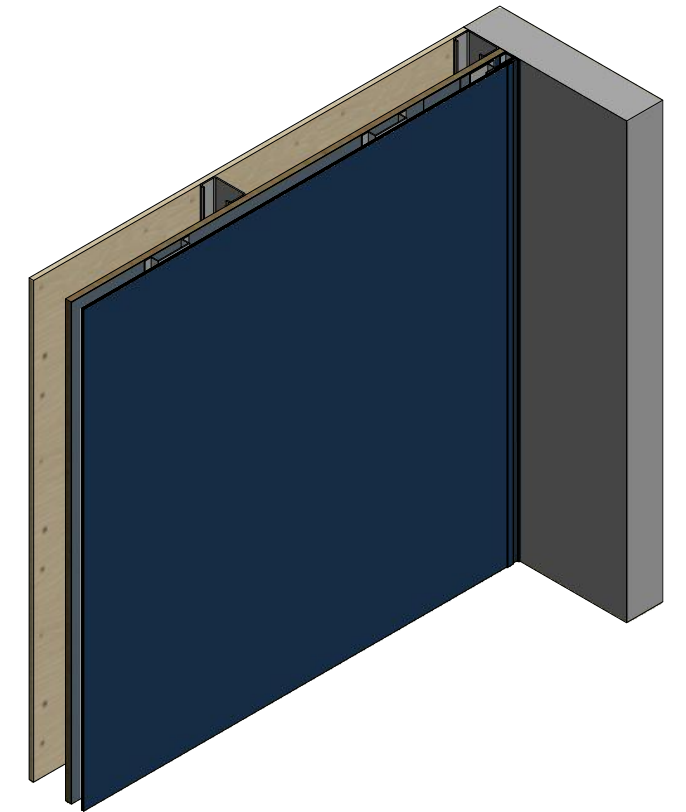
Appropriate Fastener  
(Fastener Selection Dependent on Substrate)

EJ Sub-Framing Member

SterraCore Panel

Termination J Molding Extrusion

#10 x 5/8" Wafer Head Fastener  
Appropriate Sealant  
Angle Trim w/ Return



SH/ RH/ AH Sub-Framing Member

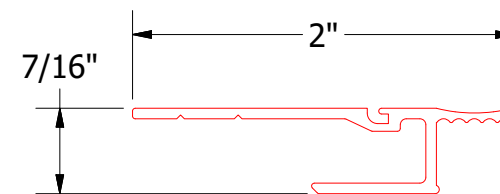
SH: D1 = 4 7/8"

RH: D1 = 6 3/8"

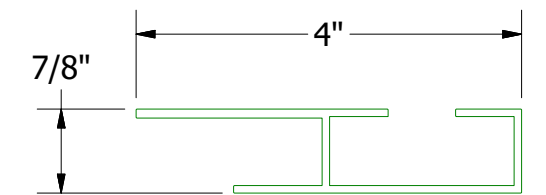
AH: D1 = 3 5/8"



SterraCore Panel



Termination J Molding Extrusion



EJ Sub-Framing Member

**Note:** Spacing between Panels and Water and Air Resistive Barrier are shown for Clarity.

REV. NO.		DATE	DESCRIPTION OF REVISION	BY	APP	TITLE SterraCore Endwall Detail - 1 Piece	
DR		DMR	DATE	5/1/2020		MATERIAL	
SH. SIZE		B	SCALE	X:X		ATAS INTERNATIONAL, INC Allentown PA 610-395-8445 Mesa AZ 480-558-7210	