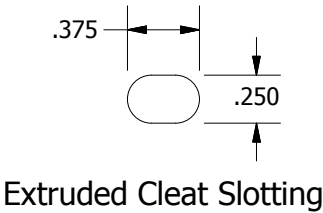
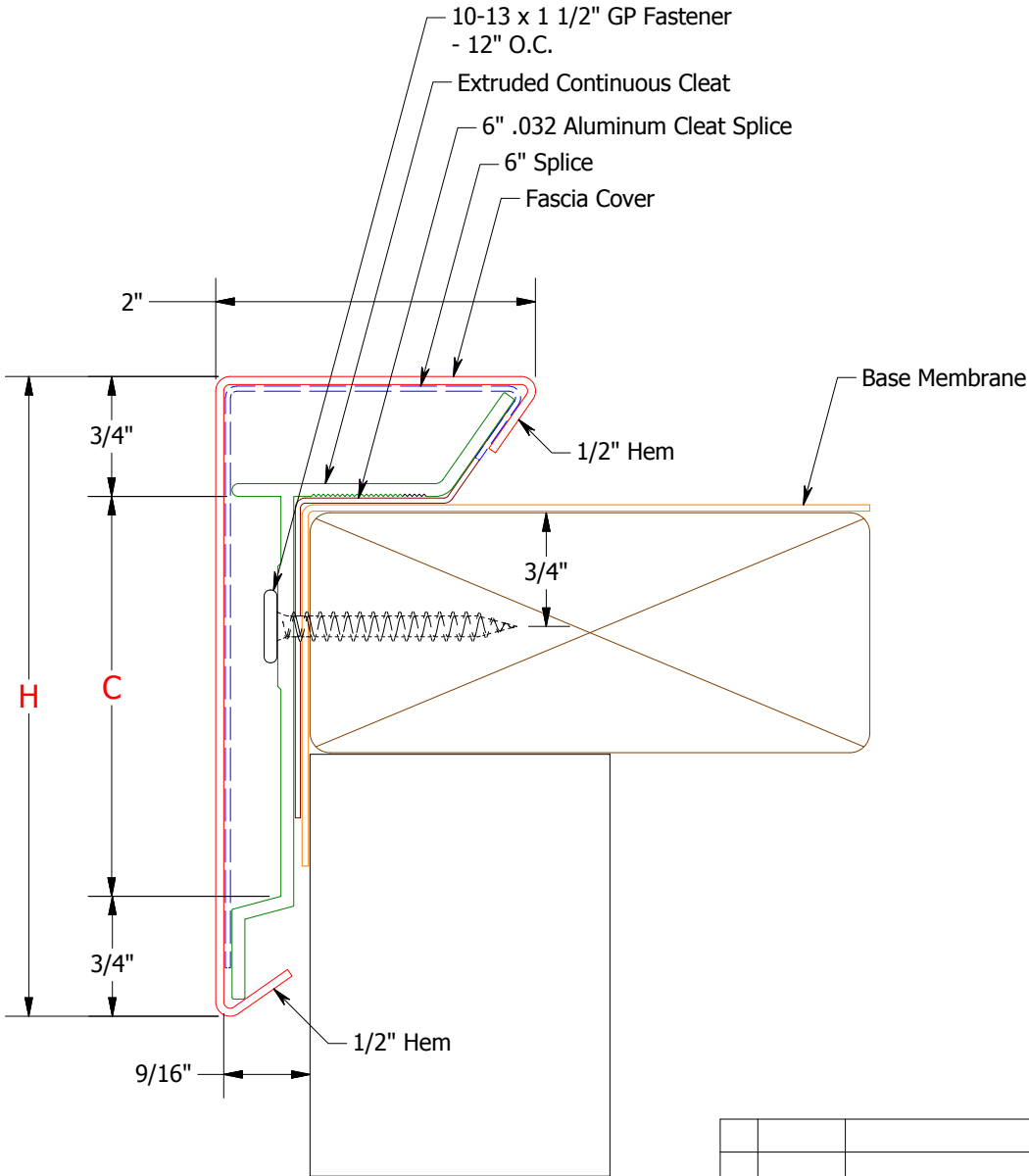
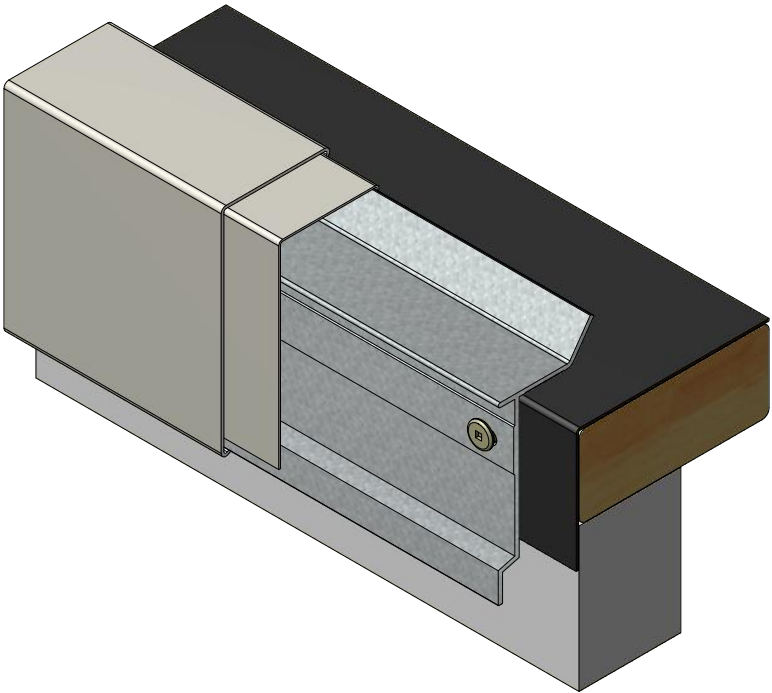


BOM per 12'		Standard Materials		Dimensions	
Component	Quantity	Material	Available Gauges	Coverage (C)	Height (H)
Fascia Cover	1	Pre-Finished Steel	24 GA, 22 GA	2-1/2"	4"
6" Splice	1	Stainless Steel	24 GA, 22 GA		
Extruded Continuous Cleat	1	Pre-Finished Alum.	.040, .050, .063		
6" .032 Aluminum Cleat Splice	1	Mill Alum.	.040, .050, .063		
10-13 x 1 1/2" GP Fastener	12				



ATAS INTERNATIONAL, INC
 Allentown PA
 610-395-8445
 Mesa AZ
 480-558-7210

TITLE			
Rapid Lok Extruded Fascia Product Detail			
DWG. NO.		DR	DATE
		PJR	12-07-15
MATERIAL		APP	DATE
		SH. SIZE	SCALE
		A	X:X

REV. NO.	DATE	DESCRIPTION OF REVISION	BY	APP
01	11/30/2018	Added Detail for Fastner Placement on Extrusion	KRK	

