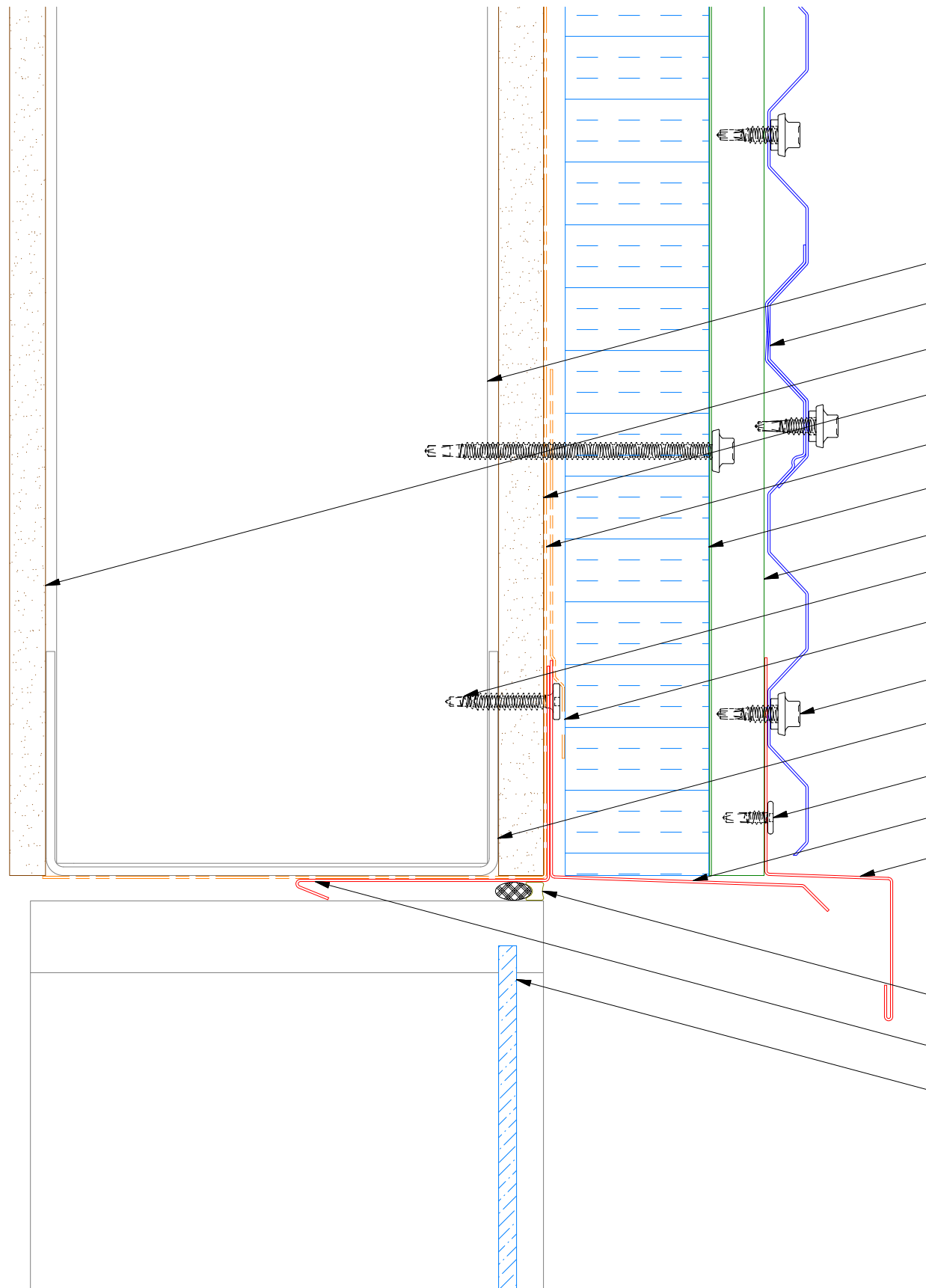
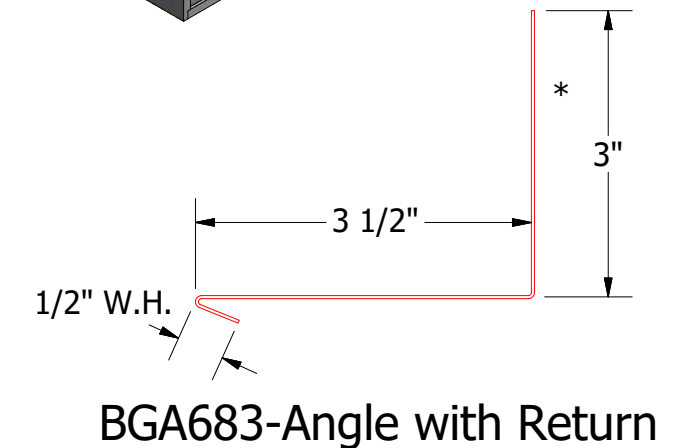
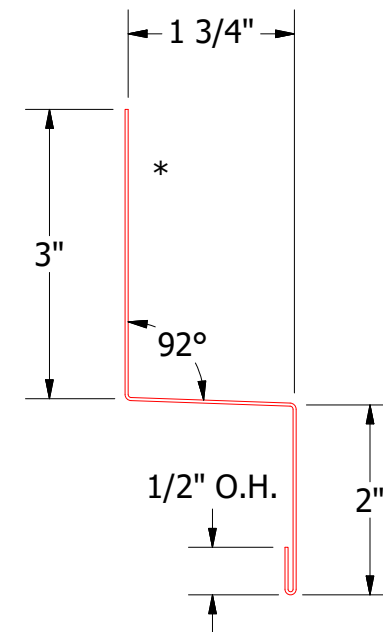
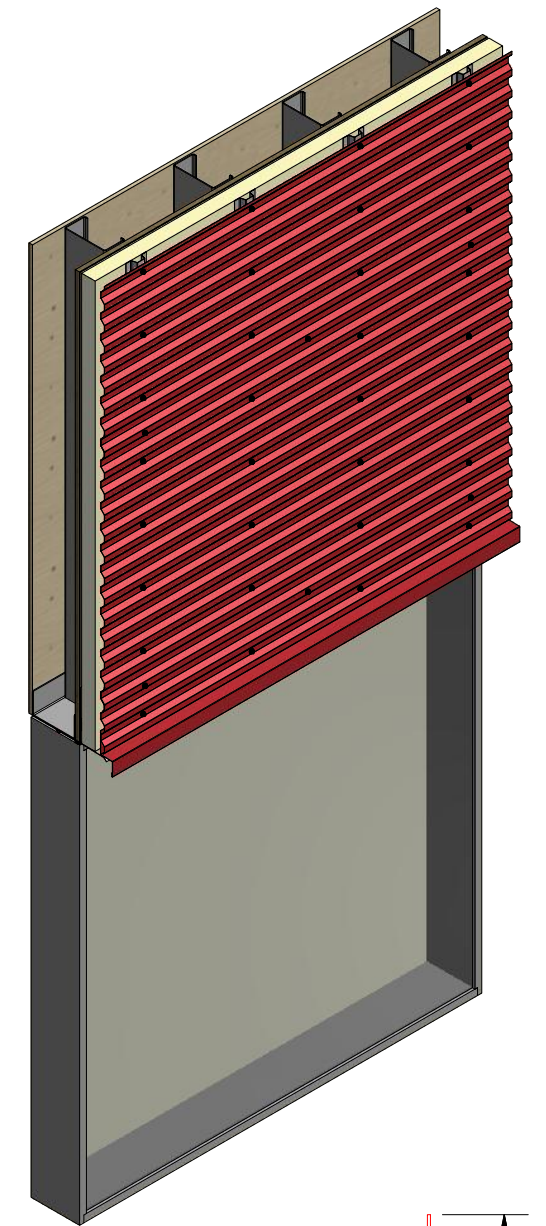
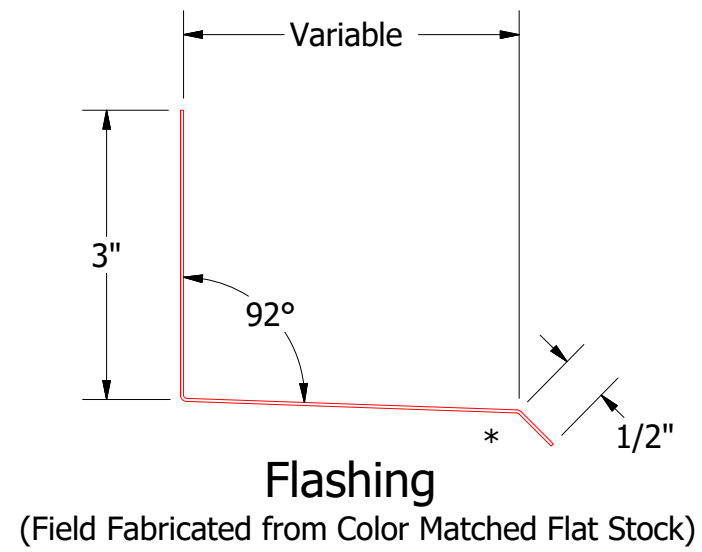


Horizontal Panel



- Metal Wall Stud
- Grand C Panel
- Interior Finish
- Exterior Gypsum Board
- Water and Air Resistive Barrier
- Water Resistant Insulation
- Vertical Subgirt
- Fastener Flashing (by others)
- Membrane Strip over Fastener Flashing
- #14 x 7/8" Painted Hex Washer Head Fastener with Washer
- Metal Stud
- #10 x 5/8" Wafer Head Fastener
- Flashing by others
- Head Trim
- Backer Rod and Sealant
- Angle with Return
- Window



ATAS ATAS INTERNATIONAL, INC
 Allentown PA
 610-395-8445
 Mesa AZ
 480-558-7210

TITLE **Grand C Panel Open Head Detail**

DWG. NO.	DR	DATE
APP	DMR	9/13/2016
MATERIAL	APP	DATE
SH. SIZE	B	SCALE
		X:X

REV. NO.	DATE	DESCRIPTION OF REVISION	BY	APP